



Bangladesh
Design & Architects

BANGLADESH DESIGN & ARCHITECTS

Believe in Quality & Loyalty

BANGLADESH DESIGN & ARCHITECTS

Believe in Quality & Loyalty

BANGLADESH
DESIGN
& ARCHITECTS

 Mirpur-1, Dhaka 1216

 +880 1773-170546
+880 1786-677672
+880 1964-917623

 www.bd-engr.com

 designarchitectsbd@gmail.com

OUR SERVICES

■ STRUCTURAL DESIGN

■ ARCHITECTURAL DESIGN

■ PLUMBING

■ INTERNSHIP & TRAINING

■ ELECTRICAL

■ RAJUK PLAN & DESIGN

■ SITE VISIT

■ EXCEL SHEET
1. BUILDING DESIGN
2. ESTIMATION
3. SOIL REPORT

■ SOIL TEST

■ DEA



WELCOME TO OUR COMPANY

We're a building design and consultancy firm dedicated to creating spaces that are not only aesthetically pleasing but also functional, sustainable, and tailored to your unique needs.

Whether you're a homeowner dreaming of a stunning renovation, a business owner seeking a dynamic workspace, or a developer looking for innovative design solutions, we're here to help you achieve your goals.

Our team of experienced architects, designers, and consultants brings a wealth of knowledge and creativity to every project. We work closely with our clients to understand their vision, budget, and timeline, ensuring a smooth and collaborative design process.

We invite you to explore our website to learn more about our services, view our portfolio of past projects, and get to know our team

We're confident that we can help you create a space that you'll love for years to come.



ABOUT COMPANY

In 2019, the company was founded with a mere 5-digit budget (BDT), but it was driven by a strong sense of ambition and a commitment to leveraging innovative technologies. Starting with just 4 members, this young enterprise quickly proved its mettle, tackling over 2000+ projects encompassing a diverse array of building types.

After several months of dedicated effort, the company was able to successfully navigate the complexities of steel structure design, bolstering its capabilities by onboarding an experienced engineer in this specialized field. This milestone achievement marked a significant turning point, further solidifying the organization's technical expertise and adaptability.

Recognizing the need for a well-rounded service offering, the company has since expanded its talent pool, integrating a programmer and a web designer into the team. This strategic move has empowered the firm to truly position itself as a "COMPLETE PACKAGE OF ENGINEERS," capable of delivering comprehensive engineering solutions to its growing client base.

The journey of this ambitious enterprise exemplifies the power of vision, perseverance, and a commitment to continuous improvement. From humble beginnings with limited resources, the company has evolved into a versatile engineering powerhouse, adeptly navigating diverse project requirements and expanding its technical prowess. This remarkable transformation underscores the organization's unwavering dedication to delivering exceptional value and staying at the forefront of the industry.



A Message FROM OUR TEAM

DON'T BELIEVE IN THE WORD "IMPOSSIBLE"

It is with immense pride and enthusiasm that we reflect on the remarkable journey our company has embarked upon since our inception in 2019. We navigated the complexities of the industry, we faced a pivotal challenge - conquering the realm of steel structure design. Through sheer determination and the strategic addition of an experienced engineer to our team, we were able to overcome this obstacle, further solidifying our technical capabilities and expanding the scope of our services.

Recognizing the need to provide our clients with a truly comprehensive suite of engineering solutions, we have since expanded our team to include a talented programmer and a skilled web designer. This strategic move has empowered us to offer our clients a "COMPLETE PACKAGE OF ENGINEERS," capable of delivering end-to-end solutions tailored to their unique needs and requirements.

Today, we stand as a testament to the power of vision, perseverance, and a relentless pursuit of excellence. From our humble beginnings to our current position as a respected industry leader, we have proven that with passion, innovation, and a dedication to our craft, anything is possible. As we move forward, we are deeply grateful for the trust and unwavering support of our valued clients and partners. It is your belief in our abilities that has fueled our growth and inspired us to reach new heights. We remain steadfast in our commitment to delivering exceptional service, pushing the boundaries of engineering innovation, and continuously enhancing our capabilities to better serve you.

Together, let us embark on the next chapter of our journey, where the possibilities are limitless and the future is ours to shape.

Our journey wasn't bitter, but it was unknown to us. We always try to improve ourselves.

WHAT WE DO

BETTER BUSINESS

■ We believe in quality & Loyalty

Our first priority is to controlling of the quality as per desire of the client then we focused on loyalty.

■ We are focused on cost effective design.

Our goal is to meet the client's needs. The task will then be handled by the appropriate authority. We don't need to incur significant costs, as our aim is to perform the work as per the client's requirements and ensure their safety and satisfaction. This client-centric approach is the key focus of our company.

ORDER PROCESS

- Our company offers order fulfillment services across Bangladesh, providing convenient options for clients to place orders via phone, email, or in-person meetings. We follow a focused, one-task-per-member approach to ensure accuracy and quality, as we believe multitasking can compromise results. This disciplined work ethic allows us to consistently deliver reliable solutions to meet our clients' needs throughout the country.



OUR BRANCH

■ Our aim to spread our knowledge to everywhere in Bangladesh as well as abroad

The company is expanding its operations to other districts by establishing multiple offices with different owners. This decentralization approach is aimed at not only benefiting the company, but also strengthening its ability to better cater to the clients' requirements in a more direct and efficient manner.

In essence, the company is transitioning towards a more distributed model to serve its clients more effectively across various geographical locations.



■ Capital Design & Consultants

- Kandhir par, Cumilla

One of our member has owned an office in Cumilla district to create an impact over other companies on that area.



■ Build Design & Consultant

- Siddhir ganj, Chittagong Road, Naryanganj

One of our member has owned an office in Naryanganj district to create an impact over other companies on that area. It is now well known office in that area & impact of that office is remarkable.



■ Mirror Design & Consultancy

- Sakhipur, Tangail

One of our member has owned an office in Tangail district to create an impact over other companies on that area.



■ HM Engineering & Consultancy

- Uttara, Dhaka

Hasnat Ali, a member enlisted with RAJUK, has started working in the engineering sector that our company operates in, including RAJUK-related projects.



Building design is crucial in the engineering sector, but stability, efficiency, and cost should be the top priorities. Achieving the right balance between

OUR SERVICES

■ BELIEVE IN QUALITY & LOYALTY

We have found different working section in order to work freely in the vast section of engineering fields. Some major sections are mentioned here.



■ Structural Design

- Major field of our company

Structural Design is a major field for the company, and they have a significant amount of work in this area. The availability of their engineers helps keep the costs of this section low.



■ Architectural Design

- Part & Parcel of our work

Architectural Design, which includes plan, elevation, & 3D modeling, is an integral part of their work. Their expert designers are highly interested in handling any architectural design and animation as per the client's requirements.



■ Electrical Design

- Electricity supplement is not ignorable

Electrical Design is crucial, as proper electrical wiring is important for the safety and well-being of the building's occupants. The company's Electrical Engineers are ready to take on tasks in this field.



■ Plumbing Design

- Beautification depends on Plumbing works

Plumbing Design is essential, as the plumbing work beautifies the design. The company suggests taking this task gently and operating it as per the design requirements.



■ Site Visit

- Important for Quality control

Site supervision is crucial for quality control, so site engineers regularly visit and justify the work progress according to the design.



■ Soil Test

- Necessary for Design

Soil testing is necessary for design, but it's challenging to determine the exact soil conditions due to formula variations. Any faults in the soil can impact the entire design.



■ Retrofitting Technique

- Old is gold so, enriched it with new techniques

Older buildings can be renovated and repurposed using new techniques, which is a better solution than complete demolition and reconstruction.



■ Internship & Training

- We offer to learn & earn

The company offers learning and earning opportunities. They aim to share their knowledge and design principles through YouTube channels and trainers.



In summary, this engineering firm is a versatile partner capable of delivering high-quality work across various disciplines, including structural, architectural, electrical, and plumbing design. They prioritize quality control, leverage appropriate soil testing, employ innovative retrofitting methods, and facilitate knowledge-sharing through educational initiatives. This multifaceted approach positions the company as a reliable forward-thinking service provider, focused on meeting the specific needs of its clients.



This engineering firm delivers comprehensive design services across key disciplines, prioritizing quality, innovative methods, and knowledge-sharing to position itself as a reliable partner for clients.



ABOUT OUR SPECIAL FEATURES

This engineering firm possesses an expert team capable of creating comprehensive Excel-based design documents for buildings and soil reports. They have already developed structural design excel sheets covering essential elements like beams, columns, foundations (including pile, pile cap, square, rectangular, and combined footings), slabs (one-way, two-way, flat plate), & staircases.



For soil reports, the company has generated Excel sheets incorporating important tests and analyses such as GSD, Atterberg Limit, Compaction, UCS test, Direct Shear Test, Liquefaction, and Bearing Capacity determination for shallow and pile foundations.

We have youtube channel & facebook Page that spread knowledge of civil engineering related to building design, construction & codes.



YouTube Channel

Bangladesh Design & Architects



Channel 1: [youtube.com/@bd-engr](https://www.youtube.com/@bd-engr)

Bangladesh Civil Engineering



Channel 2: [youtube.com/@MahbubAli](https://www.youtube.com/@MahbubAli)



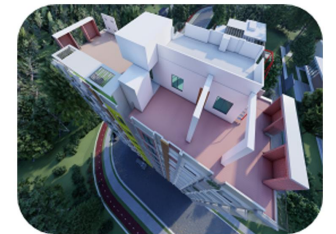
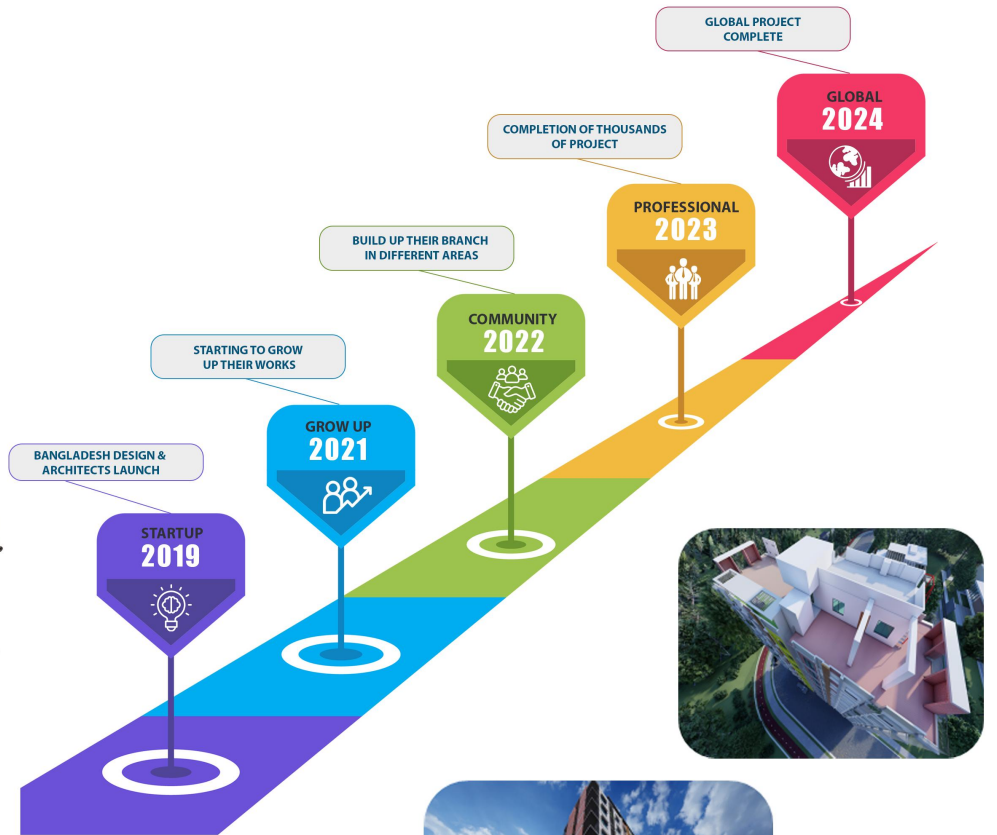
Facebook Page

Bangladesh Design & Architects



facebook.com/designarchitectsbd

OUR PROGRESS



WHY CHOOSE US?

BELIEVE IN QUALITY & LOYALTY



Expert & Professional

Expert & Professional: The team possesses extensive expertise and a professional demeanor, ensuring a high level of competence.



High Quality Work

High Quality Work: The firm is committed to producing work of the highest caliber, meeting exacting standards.



Quick In Response

Quick In Response: The company is responsive and agile in addressing client needs in a timely manner.



Professional Approach

Professional Approach: All interactions and service delivery follow a well-established, professional methodology.



Structural design is a core competency, as it ensures the stability and safety of a building. By leveraging the expertise of their engineers, this company is able to efficiently execute structural work, keeping costs manageable while maintaining high standards.

FIND YOUR DREAM HOME



WIDE RANGE OF PROPERTIES

With a robust selection of popular properties as well as leading options from expert advisors, the company is well-positioned to serve its customers.



TRUSTED BY THOUSANDS

The firm has established a strong foundation of trust, being relied upon by a community of thousands of users, including those in Bangladesh and abroad. This broad base of trust underscores the company's credibility and reputation as a reliable partner in the real estate market.



FINANCING MADE EASY

This real estate platform offers a streamlined and transparent financing experience for its users. The company provides various transaction methods that are trusted by a community of thousands of users, ensuring a convenient and reliable process.



TRANSPARENCY

Transparency is a key focus, with the platform ensuring that both the user and the landlord have access to the same information. This promotes openness and direct communication between all parties involved, enabling them to make informed decisions and access important details without any ambiguity.





OUR PROJECTS

■ BELIEVE IN QUALITY & LOYALTY



■ 10 STORIED BUILDING

PROJECT TYPE : RESIDENTIAL
LOCATION : BADDA, DHAKA



■ FIND YOUR DREAM HOME



■ 03 STORIED BUILDING

PROJECT TYPE : RESIDENTIAL
LOCATION : SAVAR, DHAKA



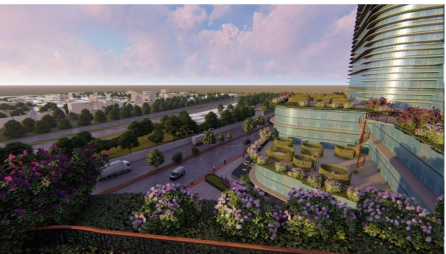
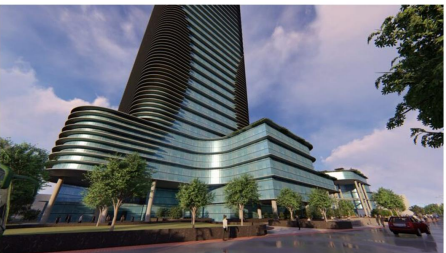
■ 08 STORIED BUILDING

PROJECT TYPE : RESIDENTIAL
LOCATION : CHITTAGONG

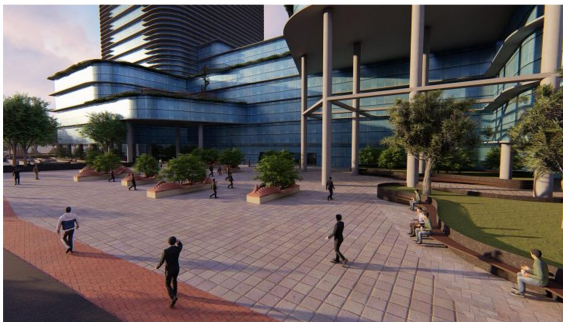


Structural design allows the company to deliver buildings that are not only aesthetically pleasing, but also structurally sound and reliable. The in-house engineering expertise enables the firm to tackle complex structural challenges with precision, ultimately contributing to the overall quality and durability of the final product.

FIND YOUR DREAM HOME



10 STORIED BUILDING
PROJECT TYPE : RESIDENTIAL
LOCATION : BASHUNDHARA, DHAKA



PROPOSED MARKET
PROJECT TYPE : COMMERCIAL
LOCATION : RAJSHAHI

BELIEVE IN QUALITY & LOYALTY



DUPLEX BUILDING
PROJECT TYPE : RESIDENTIAL
LOCATION : FARIDPUR



3 STORIED BUILDING
PROJECT TYPE : RESIDENTIAL
LOCATION : NIKUNJO, DHAKA

FIND YOUR DREAM HOME



3 STORIED HOSTEL BUILDING
PROJECT TYPE : EDUCATIONAL
LOCATION : RAJBARI, SHREEPUR, GAZIPUR



FACTORY BUILDING
PROJECT TYPE : COMMERCIAL
LOCATION : SAVAR

BELIEVE IN QUALITY & LOYALTY



MOSQUE PROJECT
PROJECT TYPE : COMMERCIAL
LOCATION : MADARIPUR



8 STORIED COMMERCIAL BUILDING
PROJECT TYPE : COMMERCIAL
LOCATION : CHITTAGONG

**BELIEVE IN
QUALITY & LOYALTY**



5 STORIED BUILDING

PROJECT TYPE : COMMERCIAL
LOCATION : BARIDHARA, DHAKA



6 STORIED RESIDENTIAL BUILDING

PROJECT TYPE : RESIDENTIAL
LOCATION : SINGRA, NATORE



6 STORIED BUILDING

PROJECT TYPE : COMMERCIAL
LOCATION : DORMATORY- WARI, DHAKA



DUPLEX BUILDING

PROJECT TYPE : RESIDENTIAL
LOCATION : AKIJ GROUP





EXCEL SHEETS

STRUCTURAL DESIGN

Overview

Our Structural Design Excel Sheet is meticulously crafted to support engineers in performing detailed structural analyses and design calculations efficiently. This tool integrates various design standards and methodologies, ensuring compliance and precision in your projects.

SLAB DESIGN

- **With Beam:** Design and analysis of slabs supported by beams.
- **Without Beam:** Design and analysis of flat slabs or slab-on-grade without beam supports.
- **Cantilever Slab:** Design and analysis of cantilever slabs projecting from a structure.

BEAM DESIGN

- Design and analysis of beams, possibly including different types of beams like simply supported, cantilever and continuous beams.

COLUMN DESIGN

- Design and analysis of Columns, possibly including different types of loads, using combination and other necessary check.

FOUNDATION DESIGN

Shallow Foundation

- **Square Footing:** Design and estimation of square footings for individual columns.
- **Rectangular Footing:** Design and estimation of rectangular footings for individual columns.
- **Combined Footing:**
 - **With Beam:** Design and estimation of combined footings that include a beam connecting the columns.
 - **Without Beam:** Design and estimation of combined footings without a connecting beam.
 - **Maximum of 5 Columns:** The combined footing design should consider up to 5 columns.

Deep Foundation

Pile with Pile Cap:

Design and estimation of pile foundations, including the pile cap.
Maximum 8 Pile Cap: Design should accommodate up to 8 piles in a single pile cap.

EARTHQUAKE LOAD ANALYSIS

- Structural analysis considering seismic loads as per relevant codes and standards.

WIND LOAD ANALYSIS

- Structural analysis considering wind loads as per relevant codes and standards.

STAIR & WATER TANK DESIGN

Overhead Water Reservoir (OHWR):

Capacity calculation and structural design of overhead water tanks.

Underground Water Reservoir (UGWR):

Capacity calculation and structural design of underground water tanks.

Septic Tank:

Septic Tank Capacity: Calculation of capacity and structural design of septic tanks.

Automated Drawing System: Excel to AutoCAD

Overview

We have developed a system that allows you to generate AutoCAD drawings directly from data entered in an Excel spreadsheet. This integration streamlines the design process, minimizes manual entry, and enhances accuracy and efficiency in creating structural drawings.

How It Works

Data Entry in Excel:

Users enter the necessary dimensions and specifications for the structural elements into predefined fields in the Excel sheet. The sheet is organized to capture all relevant data, ensuring completeness and accuracy.

VBA Automation:

A button is provided in the Excel sheet, labeled "Drawing," which triggers the VBA macro.

Upon clicking the button, the VBA script: Initializes AutoCAD and ensures it is ready to receive commands.

Retrieves data from the specified cells in the Excel sheet. Sends drawing commands to AutoCAD, instructing it to create the structural elements based on the input data.

Benefits

Efficiency: Automates the drawing process, reducing the time required to create structural drawings.

Accuracy: Minimizes human error by using precise data from Excel.

Ease of Use: Simple interface in Excel for data entry, with automated backend processes handling the drawing creation.

Consistency: Ensures that all drawings are based on consistent data input, maintaining uniformity in design.



In summary, Ensure all designs comply with local building codes and standards.
Use appropriate software tools for analysis and design, such as STAAD.Pro, ETABS, or similar.
Include safety factors and consider load combinations as required.
Detailed drawings and specifications for construction should be provided.



This engineering firm delivers comprehensive design services across key disciplines, prioritizing quality, innovative methods, and knowledge-sharing to position itself as a reliable partner for clients.

EXCEL SHEETS

SOIL TEST EXCEL SHEET

Overview

Our Comprehensive Soil Test Excel Sheet is a powerful tool designed to streamline the process of soil analysis and reporting. It provides a structured format for recording field and laboratory test results, performing calculations, and generating a detailed soil test report. This Excel sheet is an invaluable asset for geotechnical engineers, construction project managers, and soil testing laboratories.

Which Includes?

In includes "EVERYTHING" needed for soil test report.

BEARING CAPACITY RELATED

- # Bearing Capacity of Shallow Foundation
- # Up to 6 boring at a time.
- # Bowles, Terzaghi, Meyerhof & Peck formula are applied for choosing desirable value.
- # Bearing capacity of Cast in Situ Pile.

SOIL PROPERTIES RELATED

Report includes: Introduction, Description, Methods, Data, Conclusion, Recommendation.

Laboratory Test:

1. Grain Size Distribution (sieve analysis)
2. Hydrometer Analysis
3. Atterberg Limit
4. Compaction
5. UCS Test
6. Direct Shear Test
7. Triaxial Test
8. Consolidation
9. Liquefaction

Why Choose Our Excel Sheet?

Proven Reliability: Developed by experienced geotechnical engineers and tested in real-world projects.

Cost-Effective: Saves time and resources compared to manual data processing and reporting.

Support and Updates: Ongoing support and updates to ensure compatibility with the latest industry standards and best practices.



In summary, The Soil Test Excel Sheet is a powerful tool designed to streamline the process of soil analysis and reporting. With features such as easy data entry, automated calculations, error checking, and instant report generation, it significantly enhances efficiency and accuracy. This Excel sheet saves time, reduces errors, and produces consistent, high-quality reports, making it an invaluable resource for geotechnical engineers and construction professionals.

ESTIMATION

Overview

We are pleased to introduce our Estimation Excel Sheet, designed to facilitate the quick and accurate estimation of materials for various construction elements. This tool is tailored for construction professionals seeking efficiency and precision in their project planning and execution.

Which Includes?

Brick Estimation:

Calculate the number of bricks and the amount of mortar required for masonry work. Input fields for wall dimensions, brick size, and mortar thickness.

Concrete Estimation:

For Beam & Column:
Estimate the volume of concrete needed for beams and columns. Input fields for dimensions and mix ratios.

For Slab & Footing:

Estimate the volume of concrete required for slabs and footings. Input fields for area, thickness, and mix ratios.

Steel & Concrete Estimation:

For Slab/Footing/Pile/Pile Cap/Landing:
Detailed estimation of steel reinforcement and concrete quantities. Input fields for dimensions, reinforcement details, and concrete mix ratios.

Spiral Column Estimation:

Specific estimation for spiral columns, including steel and concrete. Concrete & Stirrup Estimation for Beam & Column: Accurate calculation of concrete volume and stirrup requirements for beams and columns.

Stair Reinforcement & Concrete Estimation:

Estimate the reinforcement and concrete needed for stair construction. Input fields for stair dimensions, reinforcement details, and concrete mix ratios.

Thumb Estimate in a Second:

Quick estimation feature for a rough assumption of material quantities. Ideal for initial project planning and budgeting.



In summary, Our Comprehensive Estimation Excel Sheet is an essential tool for construction professionals, offering a robust solution for material estimation across various structural elements. With its user-friendly interface and comprehensive features, it enhances project planning, budgeting, and execution.

This engineering firm excels in delivering integrated design solutions across critical disciplines, emphasizing excellence, innovative methodologies, and a commitment to knowledge exchange. These qualities position us as a trusted and dependable partner for our clients.

OUR TEAM

OUR ENGINEERING TEAM BOASTS EXTENSIVE EXPERIENCE AND UNDERGOES REGULAR TRAINING ALIGNED WITH INTERNATIONAL STANDARDS SUCH AS BNBC, ACI, AND AASHTO. THIS COMMITMENT ENSURES THAT WE MAINTAIN THE HIGHEST STANDARDS OF EXPERTISE AND STAY AT THE FOREFRONT OF INDUSTRY BEST PRACTICES, PROVIDING OUR CLIENTS WITH UNPARALLELED SERVICE AND INNOVATIVE SOLUTIONS.



ENGR. MD. MAHBUB ALAM
Managing Director

BIO

B. Sc. in Civil Engineering (RUET)
M. Sc. in Civil & Geotechnical (BUET)
Member of IEB (Institute of Engineers Bangladesh) || ID No. M/44145
Member of IAENG (International Association of Engineers) || ID No. 270961
Researcher of Geotechnical Engineering who has published article on
"Journal of Geotechnical Studies", "Journal of Structural Technology" &
"Australian Journal of Civil Engineering"



Engr. Md. Mahbub Ali
Chief Engineer

- ▶ B.Sc. in Civil Engineering
- ▶ Structural Design & Building Code Analyst
- ✉ mdmahbubalam093@gmail.com



Engr. Abu Rayhan
Director of Operations

- ▶ B. Sc. in Civil Engineering
- ▶ M. Eng. in Civil & Structure (DUET)
- ✉ rayhanroktim1996@gmail.com



Engr. F. M. Ali Taufique
Sr. Structural Engineer

- ▶ B. Sc. in Civil Engineering
- ▶ M. Eng. in Geotechnical Engineering (BUET)
- ▶ Life Fellow of IEB (Institute of Engineers Bangladesh) ID No. F/1986



Engr. Humayun Kabir
Structural Engineer

- ▶ B. Sc. in Civil Engineering Steel Structure Design Specialist
- ▶ Director of Capital Design & Consultants
- ✉ engrhumayun0@gmail.com



Engr. Md. Hasnat Ali
Sr. Structural Engineer

- ▶ B.Sc. in Civil Engineering (DUET)
- ▶ Life Fellow of IEB (Institute of Engineers Bangladesh) ID No. F/13473
- ▶ RAJUK Reg. No. DMINB/CE-0492
- ✉ hmdcl6@gmail.com



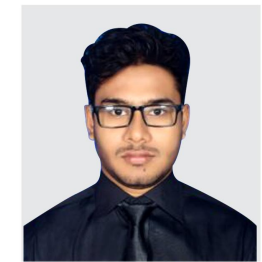
Engr. Amimul Ahasan
Site Engineer

- ▶ B.Sc. in Civil Engineering (RUET)
- ▶ Associate Member of IEB (Institute of Engineers Bangladesh) ID No. AMIEB-22362
- ✉ amimulahasan51@gmail.com



Engr. Tanvir Hasan
Chief Architectural Designer

- ▶ B.Sc. in Civil Engineering (RUET)
- ▶ Associate Member of IEB Specialist in Rendering & Effect Control
- ✉ tan14vir@gmail.com



Md. Mojibul Islam
Electrical Engineer

- ▶ B. Sc. in Electrical Engineering (BAUET)
- ✉ mdmojidulislam38@gmail.com



Abrar Fahim Toki
Architectural Designer

- ▶ B.Sc. in Architecture Architectural Animation Specialist
- ✉ abrarfahimtoki@gmail.com



**BANGLADESH DESIGN &
ARCHITECTS**

Believe in Quality & Loyalty

OUR ENGINEERING TEAM BOASTS EXTENSIVE EXPERIENCE AND UNDERGOES REGULAR TRAINING ALIGNED WITH INTERNATIONAL STANDARDS SUCH AS BNBC, ACI, AND AASHTO. THIS COMMITMENT ENSURES THAT WE MAINTAIN THE HIGHEST STANDARDS OF EXPERTISE AND STAY AT THE FOREFRONT OF INDUSTRY BEST PRACTICES, PROVIDING OUR CLIENTS WITH UNPARALLELED SERVICE AND INNOVATIVE SOLUTIONS.



Md. Abu Nayem
Plumbing Designer

- B.Sc. in Civil Engineering Plumbing Design Specialist
- Diploma in Civil Engineering



Wahedur Rahman
Project Manager

- B.Sc. in Civil Engineering Architectural Drafting Specialist
- ce_wahed87@gmail.com



S.M. SHADMAN WASIF
Structural Engineer

- B.Sc. in Civil Engineering (UITS)
- Specialist in Structural Detailing
- wasifprotik8@gmail.com



Md. Ariful Islam Akash
Structural Engineer

- B.Sc. in Civil Engineering
- arifulislam01415@gmail.com



Prof. Dr. Md. Mokhlesur Rahman
Adviser

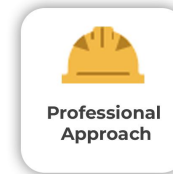
- Ph.D. M.Sc. & B.Sc. in Civil Engineering (BUET)
- Former Head, Dean & Professor of Civil Engineering (DUET)
- Life Fellow of IEB (Institute of Engineers Bangladesh) ID No. F/05664
- prof.dr.mokhles.duet@gmail.com



Md. Ariful Islam
Structural Retrofit Engineer

- B.Sc. in Civil Engineering Retrofitting specialist
- arifulislambd1991@gmail.com


Believe in Quality & Loyalty



THANKS FOR YOUR COMPANION :)

Contact Us

- +880 1773-170546
- +880 1786-677672
- +880 1964-917623
- designarchitectsbd@gmail.com
- Mirpur-1, Dhaka 1216
- www.bd-engr.com



Ensuring Strength, Stability, and Serviceability

By integrating these strategies, we ensure that every project upholds the principles of Strength, Stability, and Serviceability, delivering structures that are not only safe and reliable but also efficient and sustainable.

CONTACT US

- +880 1773-170546
- +880 1786-677672
- +880 1964-917623
- designarchitectsbd@gmail.com
- Mirpur-1, Dhaka 1216
- www.bd-engr.com



**BANGLADESH DESIGN &
ARCHITECTS**

Believe in Quality & Loyalty